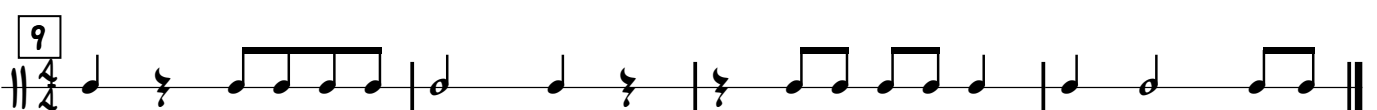
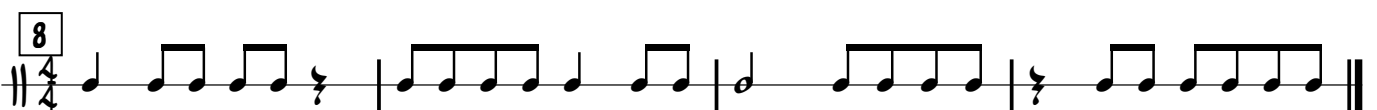
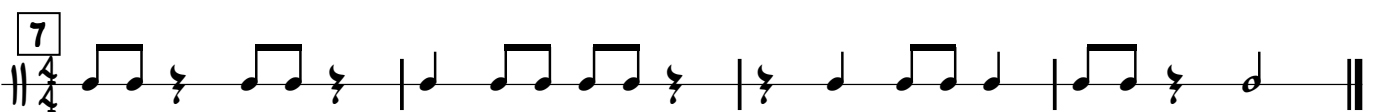
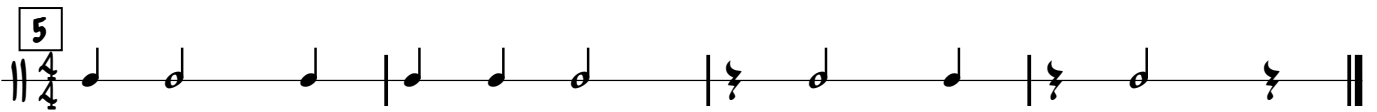
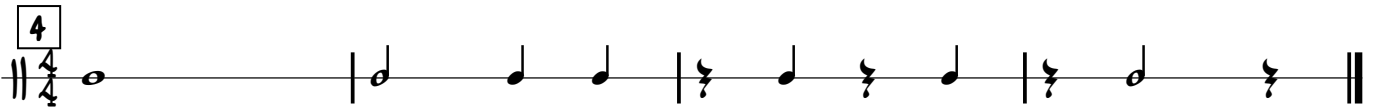
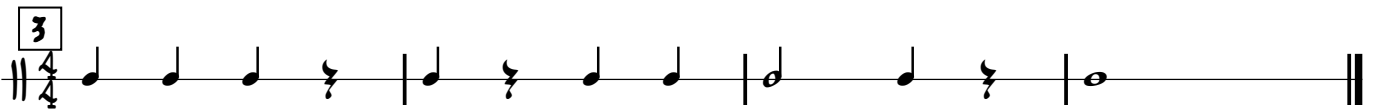
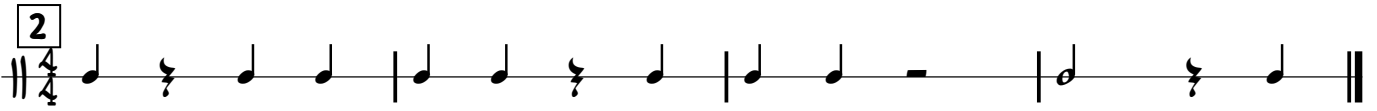
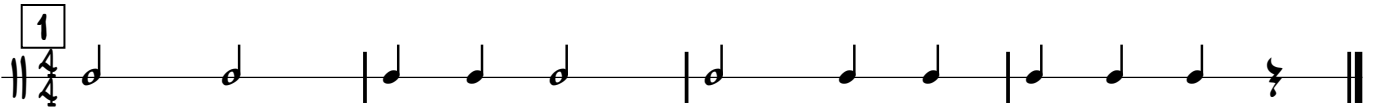


# SOLFEGGIO RITMICO

Battere le mani per tenere il tempo.

Solfeggiare con la sillaba "Ta" le semiminime, minime o semibreve e con la sillaba "Ti" le crome.



11




12



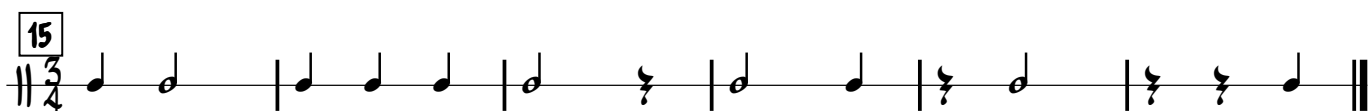
13



14



15



16



17



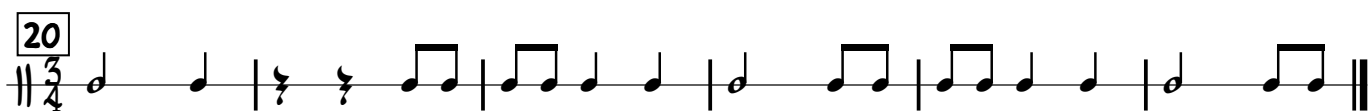
18



19

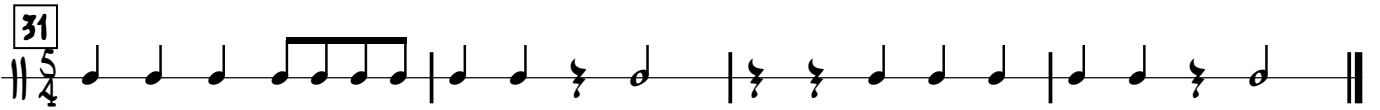


20





31



Exercise 31: A single staff in 5/4 time. The first measure contains a quarter note, followed by a beamed eighth-note pair, and another quarter note. The second measure has a quarter note, a quarter rest, and a half note. The third measure has a quarter rest, a quarter note, and a half note. The fourth measure has a quarter note, a quarter rest, and a half note. The piece ends with a double bar line.

32



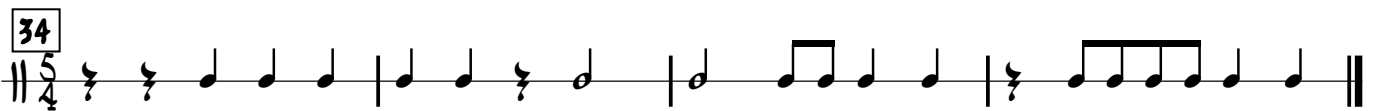
Exercise 32: A single staff in 5/4 time. The first measure has a quarter note, a beamed eighth-note pair, and a quarter note. The second measure has a quarter rest, a beamed eighth-note pair, and a quarter note. The third measure has a quarter note, a quarter rest, and a quarter note. The fourth measure has a beamed eighth-note pair, a beamed eighth-note pair, a beamed eighth-note pair, and a quarter note. The piece ends with a double bar line.

33



Exercise 33: A single staff in 5/4 time. The first measure has a quarter note, a quarter rest, and a quarter note. The second measure has a beamed eighth-note pair, a quarter note, and a quarter rest. The third measure has a quarter note, a quarter note, and a quarter note. The fourth measure has a beamed eighth-note pair, a beamed eighth-note pair, and a quarter note. The piece ends with a double bar line.

34



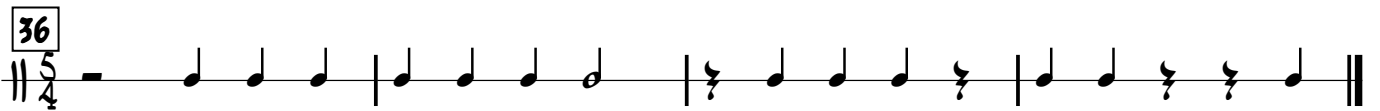
Exercise 34: A single staff in 5/4 time. The first measure has a quarter rest, a quarter note, and a quarter note. The second measure has a quarter note, a quarter rest, and a half note. The third measure has a half note, a beamed eighth-note pair, and a quarter note. The fourth measure has a quarter rest, a beamed eighth-note pair, and a quarter note. The piece ends with a double bar line.

35



Exercise 35: A single staff in 5/4 time. The first measure has a quarter note, a quarter rest, and a quarter note. The second measure has a beamed eighth-note pair, a beamed eighth-note pair, a beamed eighth-note pair, and a quarter note. The third measure has a quarter note, a quarter rest, and a quarter note. The fourth measure has a beamed eighth-note pair, a beamed eighth-note pair, and a quarter note. The piece ends with a double bar line.

36



Exercise 36: A single staff in 5/4 time. The first measure is a whole rest. The second measure has a quarter note, a quarter note, and a quarter note. The third measure has a quarter note, a quarter note, and a quarter note. The fourth measure has a quarter rest, a quarter note, and a quarter note. The fifth measure has a quarter note, a quarter rest, and a quarter note. The piece ends with a double bar line.

37



Exercise 37: A single staff in 5/4 time. The first measure has a quarter note, a beamed eighth-note pair, and a quarter note. The second measure has a quarter rest, a beamed eighth-note pair, and a quarter note. The third measure is a whole rest. The fourth measure has a quarter note, a quarter note, and a quarter note. The piece ends with a double bar line.

38



Exercise 38: A single staff in 5/4 time. The first measure has a quarter rest, a quarter note, and a quarter note. The second measure has a quarter note, a quarter rest, and a quarter note. The third measure has a quarter note, a beamed eighth-note pair, and a quarter note. The fourth measure has a quarter rest, a beamed eighth-note pair, and a quarter note. The piece ends with a double bar line.

39



Exercise 39: A single staff in 5/4 time. The first measure is a whole rest. The second measure has a quarter rest, a beamed eighth-note pair, and a quarter note. The third measure has a quarter note, a quarter note, and a quarter note. The fourth measure has a quarter note, a quarter rest, and a quarter note. The piece ends with a double bar line.

40



Exercise 40: A single staff in 5/4 time. The first measure has a quarter rest, a quarter note, and a quarter note. The second measure has a quarter note, a quarter note, and a quarter note. The third measure has a quarter note, a beamed eighth-note pair, and a quarter note. The fourth measure is a whole rest. The piece ends with a double bar line.

41

42

43

44

45

46

47

48

49

50